

# Glass Sectional Overhead Garage Doors



6-8 MEADOW CLOSE  
FINEDON ROAD, WELLINGBOROUGH  
NORTHAMPTONSHIRE, NN8 4BH.

TELEPHONE: 01933 229135

EMAIL: [ENQUIRIES@THEGARAGEDOORCENTRE.CO.UK](mailto:ENQUIRIES@THEGARAGEDOORCENTRE.CO.UK)

# DOORS FOR THE **AUTOMOTIVE** **INDUSTRY**



# INDUSTRIAL SECTIONAL DOORS

Industrial Sectional Doors are hands down the number one choice for car dealerships and showrooms. And for good reason. Fitted with large glazed panels, they act as display windows and offer an unimpeded view into showrooms. The transparency invites closer inspection and helps to seamlessly connect interior and exterior spaces.

Within these pages, you'll find an array of sectional doors. From the simple elegance of clear glass, to more highly mirrored and colour-clad varieties. They all have a few things in common though. By opening vertically and sliding along tracks, under the ceiling of the building, they provide a practical space saving solution in commercial settings.

Wicket doors can be built into the doors, creating a practical trip-free threshold. With the option of added glazing, thermal insulation and security can be further enhanced. And with DURATEC glazing fitted as standard to all Hörmann industrial sectional doors, you'll get a scratch resistant surface that offers a permanently clear view.



**Sales areas**

Thanks to large glazings made of real glass, the door becomes a display window, attracting potential customers

# MAXIMUM TRANSPARENCY

Aluminium doors with large glazing

**Warehouses**

Large glazing provides workplaces with natural light

**Car showrooms**

Bright, well-lit showrooms convey a sense of space and professionalism

# FITTING IN MODERN ARCHITECTURE

Glazed aluminium doors



## Commercial buildings

Aluminium profiles with thermal break and optional climatic glazing ensure that insulation is improved by up to 55%

**Collective garages**

Variety of infill options, from expanded mesh to perforated sheet infill for door and wicket door (only ALR F42)



# ELEGANT EYE-CATCHER

Exclusively glazed aluminium doors



#### **Exclusive door appearance**

A clear overall appearance thanks to the offset glazing with a mix of mirroring and transparency





## CASE STUDY

### Platinum Executive Travel

*“My favourite aspect of the structure is the way in which the doors sit perfectly with the overall design of the building. Now that the ALR Vitraplans are installed, they are even better than I expected.”*

**Saleem Iqbal, Owner**

**Matching side doors**

The combination of the sectional door and matching side door with offset glazing creates a harmonious overall appearance

**Designed facades**

Permanent surface protection thanks to standard DURATEC glazing



# MORE LIGHT FOR WORKSHOPS

Glazed aluminium doors with steel bottom section

## Workshops

Matching glazing division for doors  
with and without wicket doors



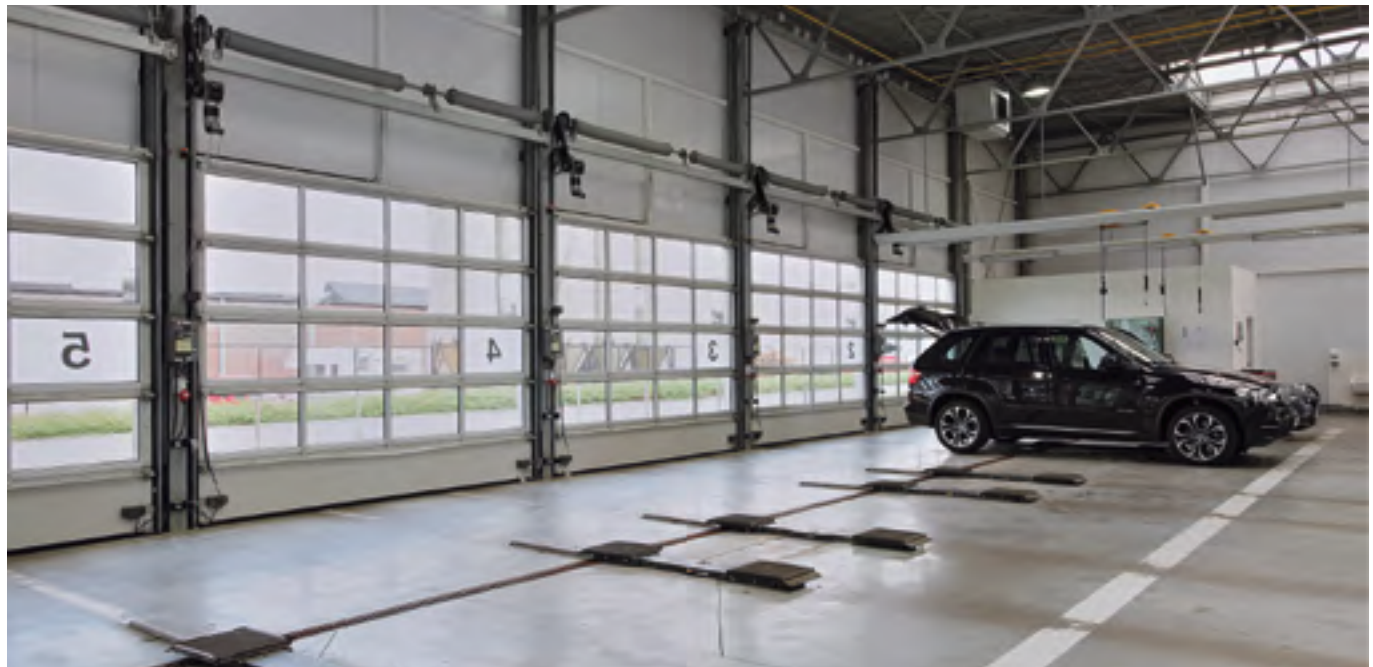


**Commercial buildings and warehouses**

The PU-foamed bottom section can be replaced easily and inexpensively if damaged

**Protection bollards protect from damage**

When used outside, they avoid expensive collision damage on buildings. When used inside, they protect the door tracks from collision damage



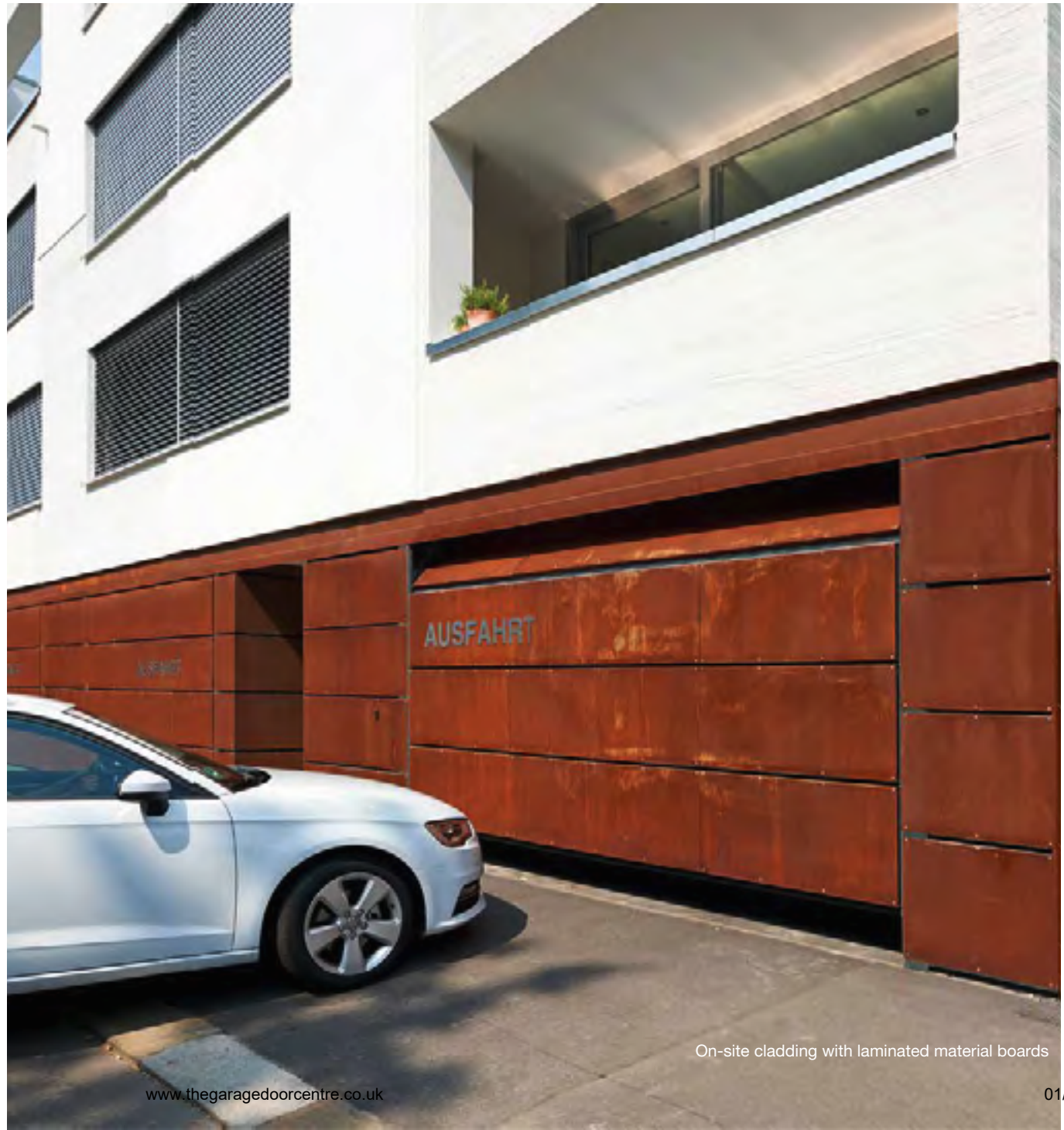
**Workshops**

Large glazings for light in the workspace

# DOOR AND FAÇADE DESIGN

Aluminium doors for on-site cladding

On-site cladding with timber panels



On-site cladding with laminated material boards

On-site cladding with aluminium compound board



# WICKET DOORS

## Trip-free passage

Wicket doors with trip-free thresholds pose less of a risk for persons stumbling and injuring themselves. Tool cars or trolleys can easily pass over the very flat stainless steel threshold with rounded edges.





# SIDE DOORS

Matching the door



# INDIVIDUAL COLOUR SCHEMES

For greater design freedom





# MAXIMUM SCRATCH RESISTANCE AND THERMAL INSULATION

DURATEC glazing fitted as standard for Hörmann sectional doors

## Elegant transparency

The exclusive aluminium frame door ALR F42 Vitraplan impresses with an engaging mix of mirroring and transparency. The ART 42 / ART 42 Thermo with 13 infill variations provides for more light or improved ventilation in the garage.



### ALR F42 Vitraplan

The door is especially elegant thanks to offset, flush-fitting glazing. The frame profile is concealed, so nothing detracts from the overall appearance.



### ART 42 / ART 42 Thermo

The Hörmann aluminium frame door with standard profile **1** or profile with thermal break **2** impresses with more light in the garage or better ventilation in the parking boxes of collective garages.



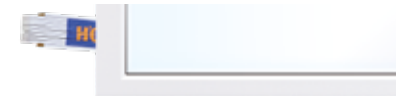
ART 42

ART 42 Thermo

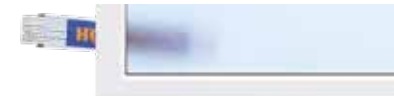
### Infill variations



Polycarbonate double pane, clear  
Synthetic double pane, clear



Synthetic double pane, white tinted (opal / clear)



Synthetic double pane, crystal texture



Synthetic double pane, brown tinted



Multiple-moulded pane



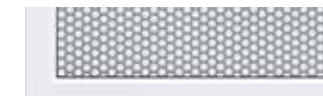
Synthetic double pane, grey tinted



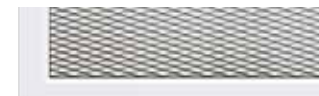
PU sandwich infill, smooth ■ NEW



PU sandwich infill, Stucco ■ NEW



Perforated stainless steel sheet



Stainless steel expanded mesh



Crimped mesh



Welded grille

## OVERVIEW OF ALUMINIUM FRAME DOORS



ART 42



ART 42 Thermo

### Aluminium frame door

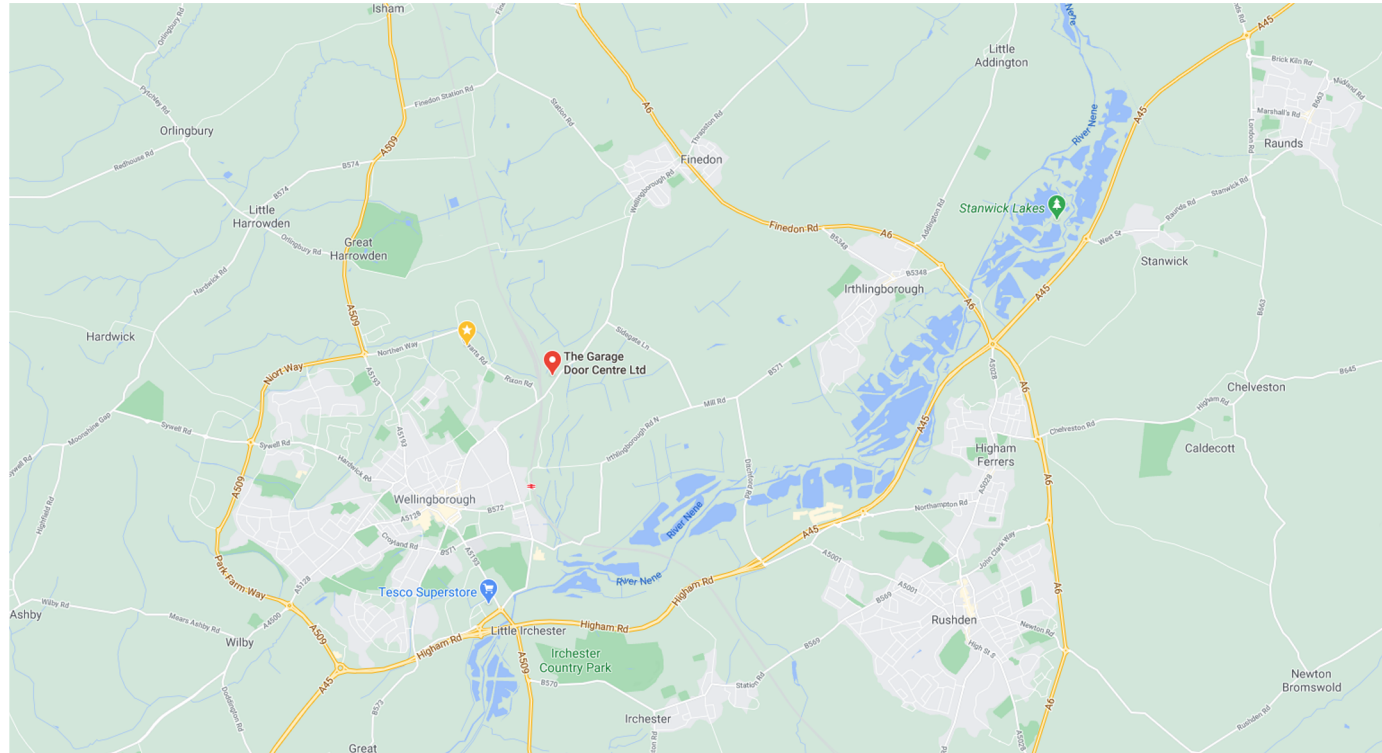
Frame	Traffic white RAL 9016 15 preferred colours 6 Hörmann colours Matt deluxe RAL to choose	Traffic white RAL 9016 15 preferred colours 6 Hörmann colours Matt deluxe RAL to choose
Infills	13 variants	13 variants
Max. width	5500 mm	5500 mm
Max. height	3000 mm	3000 mm



### Configurator

With the door configurator, you can conveniently test many design and product variations on your own PC or tablet in advance. You can put your dream door together in just a few clicks by selecting the door type, surface finish, colour and size.

# THE GARAGE DOOR CENTRE



TELEPHONE: 01933 229135

EMAIL: [ENQUIRIES@THEGARAGEDOORCENTRE.CO.UK](mailto:ENQUIRIES@THEGARAGEDOORCENTRE.CO.UK)

6-8 MEADOW CLOSE  
FINEDON ROAD, WELLINGBOROUGH  
NORTHAMPTONSHIRE, NN8 4BH.

